

# Measles and rubella monthly update— WHO European Region

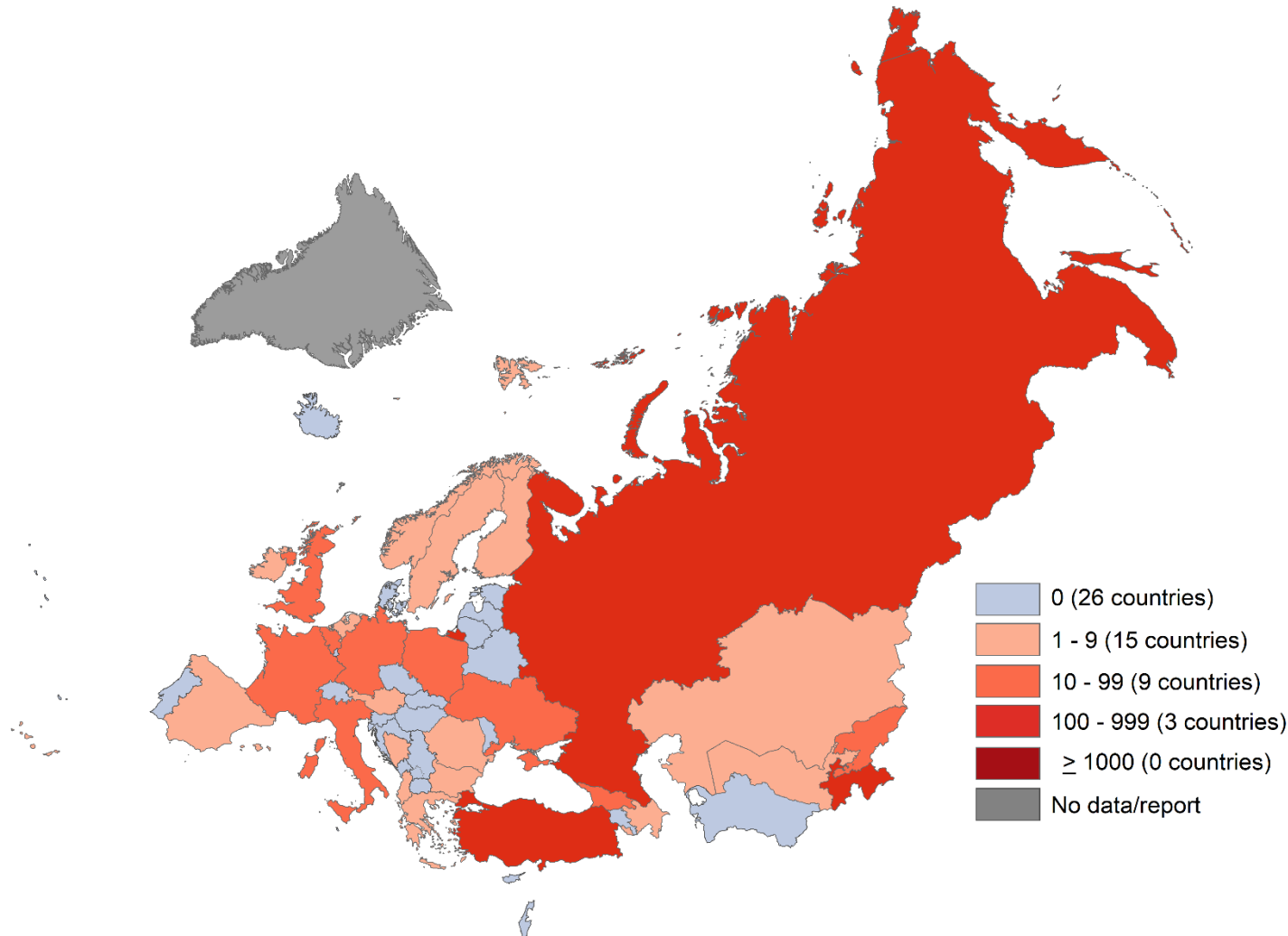


**Vaccine-preventable Diseases and Immunization**  
**Division of Country Health Programmes**

Data as of 31 January 2023

# Measles Updates including 2022

# Measles cases—WHO European Region, January–December 2022

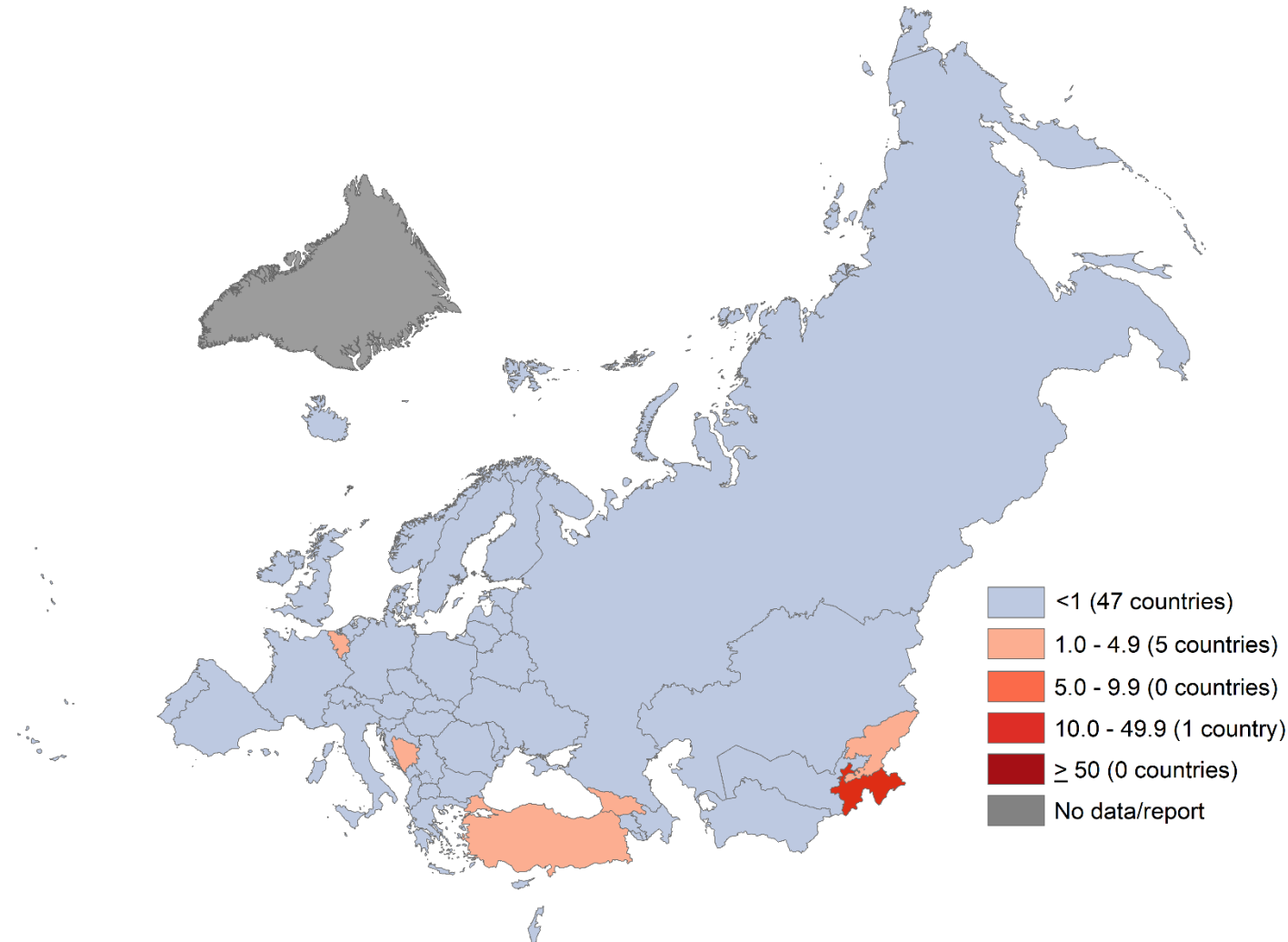


Top 10 countries	
Country	Cases
Tajikistan	451
Türkiye	116
Russian Federation	102
United Kingdom	50
Poland	27
Kyrgyzstan	20
France	19
Italy	18
Belgium	17
Germany	14

27 (51%) countries reported measles cases in the rolling 12-months.

Disclaimer: The boundaries and names shown and the designations used on this map do not imply the expression of any opinion whatsoever on the part of the World Health Organization concerning the legal status of any country, territory, city or area or of its authorities, or concerning the delimitation of its frontiers or boundaries. Dotted and dashed lines on maps represent approximate border lines for which there is no yet full agreement. © WHO 2023. All rights reserved.

# Measles incidence per million population— WHO European Region, January–December 2022



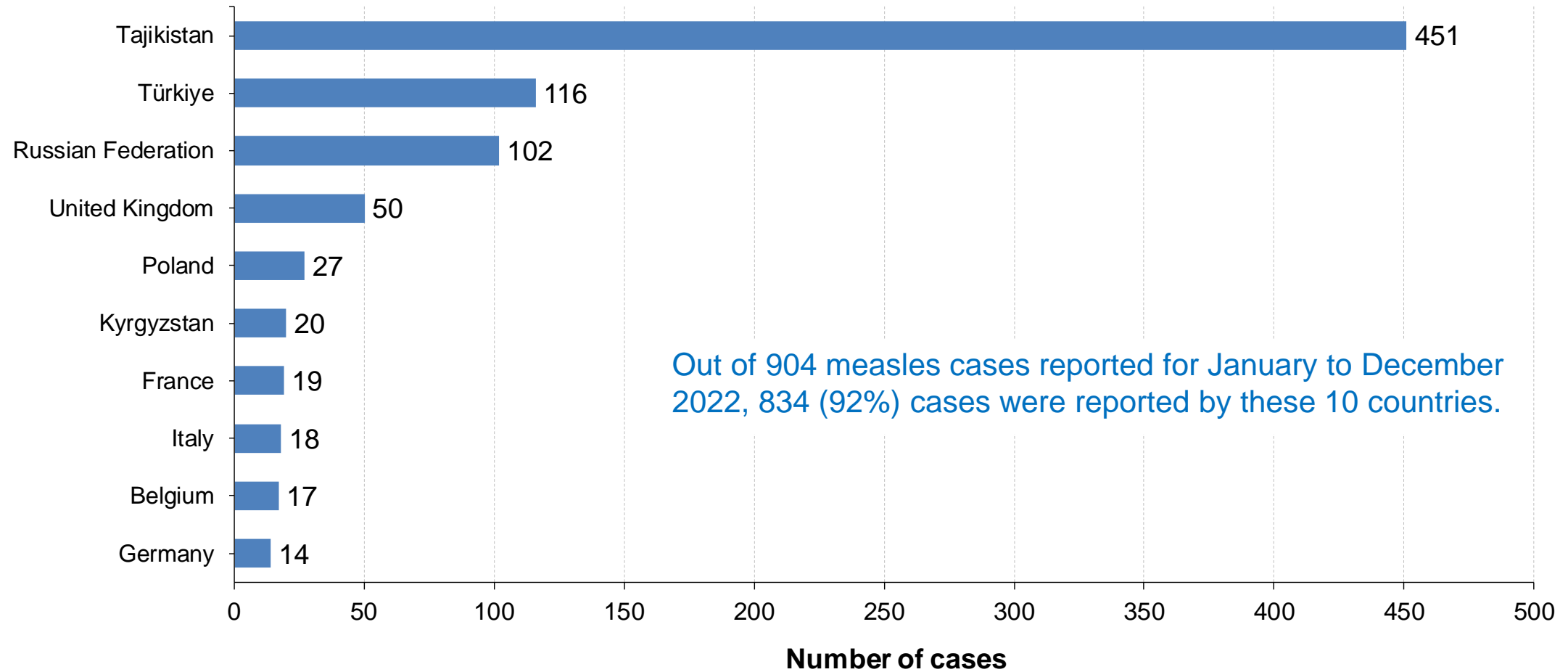
Top 10 countries		
Country	Cases	Incidence
Tajikistan	451	45.31
Georgia	12	3.20
Kyrgyzstan	20	3.02
Bosnia and Herzegovina	6	1.86
Belgium	17	1.46
Türkiye	116	1.36
United Kingdom	50	0.74
Russian Federation	102	0.70
Poland	27	0.68
Romania	9	0.46

Disclaimer: The boundaries and names shown and the designations used on this map do not imply the expression of any opinion whatsoever on the part of the World Health Organization concerning the legal status of any country, territory, city or area or of its authorities, or concerning the delimitation of its frontiers or boundaries. Dotted and dashed lines on maps represent approximate border lines for which there November not yet be full agreement. © WHO 2023. All rights reserved.

Population source: United Nations, Department of Economic and Social Affairs, Population Division. World Population Prospects: The 2022 revision.

Data source: Monthly aggregated and case-based data reported by Member States to WHO/Europe directly or via ECDC/TESSy data as of 31 January 2023

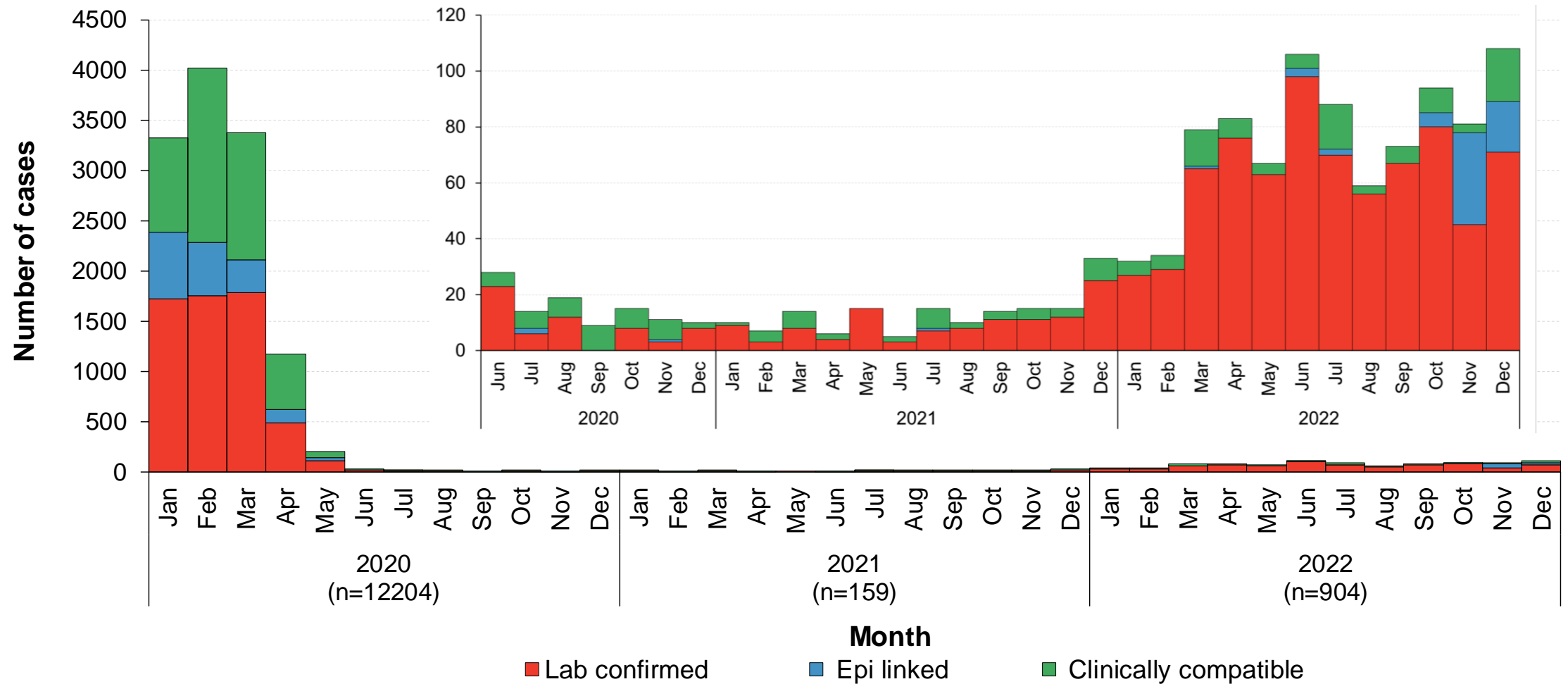
# Ten countries with the highest numbers of measles cases— WHO European Region, January–December 2022



27 (51%) countries reported measles cases in the rolling 12-months.

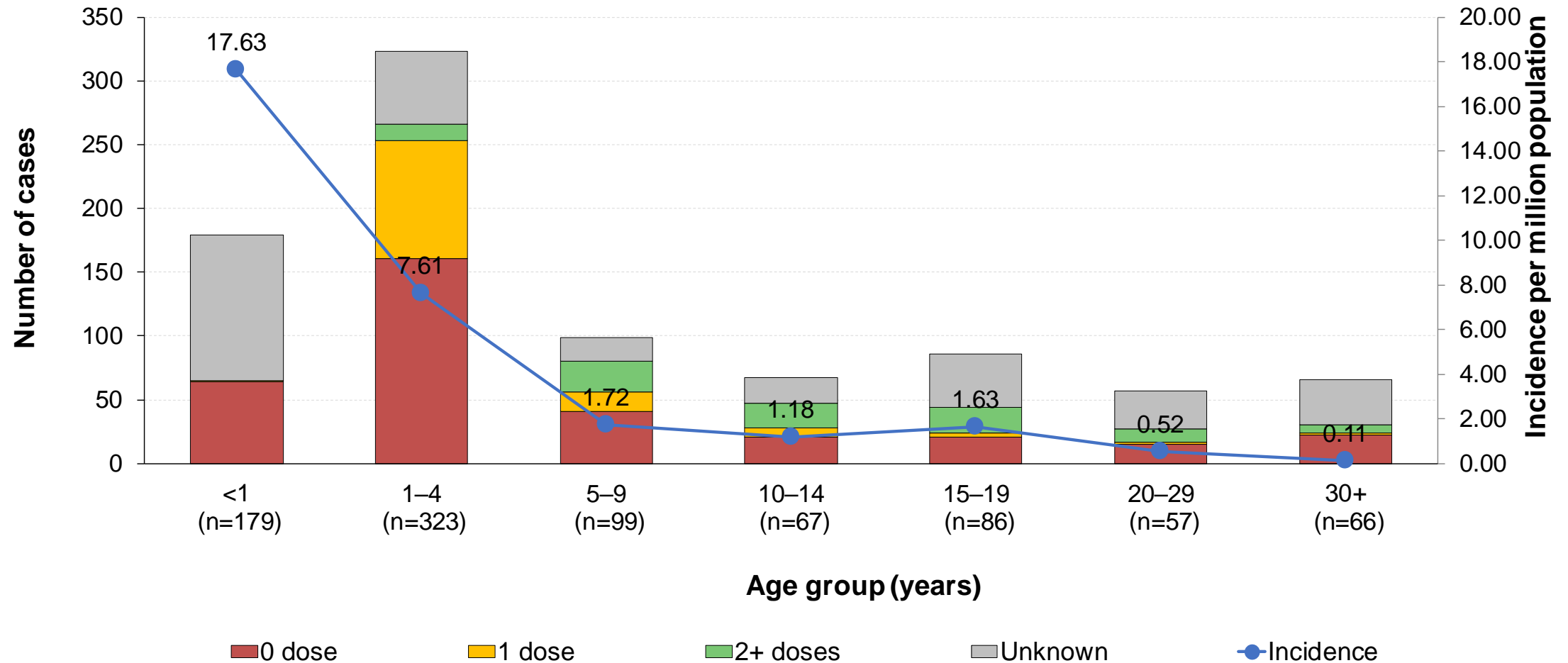
Data source: Monthly aggregated and case-based data reported by Member States to WHO/Europe directly or via ECDC/TESSy data as of 31 January 2023

# Measles cases by month—WHO European Region, 2020–December 2022



Criteria for date of case inclusion may differ in accordance with Member States' surveillance systems.

# Measles cases and incidence by age group\* and vaccination status—WHO European Region, January–December 2022

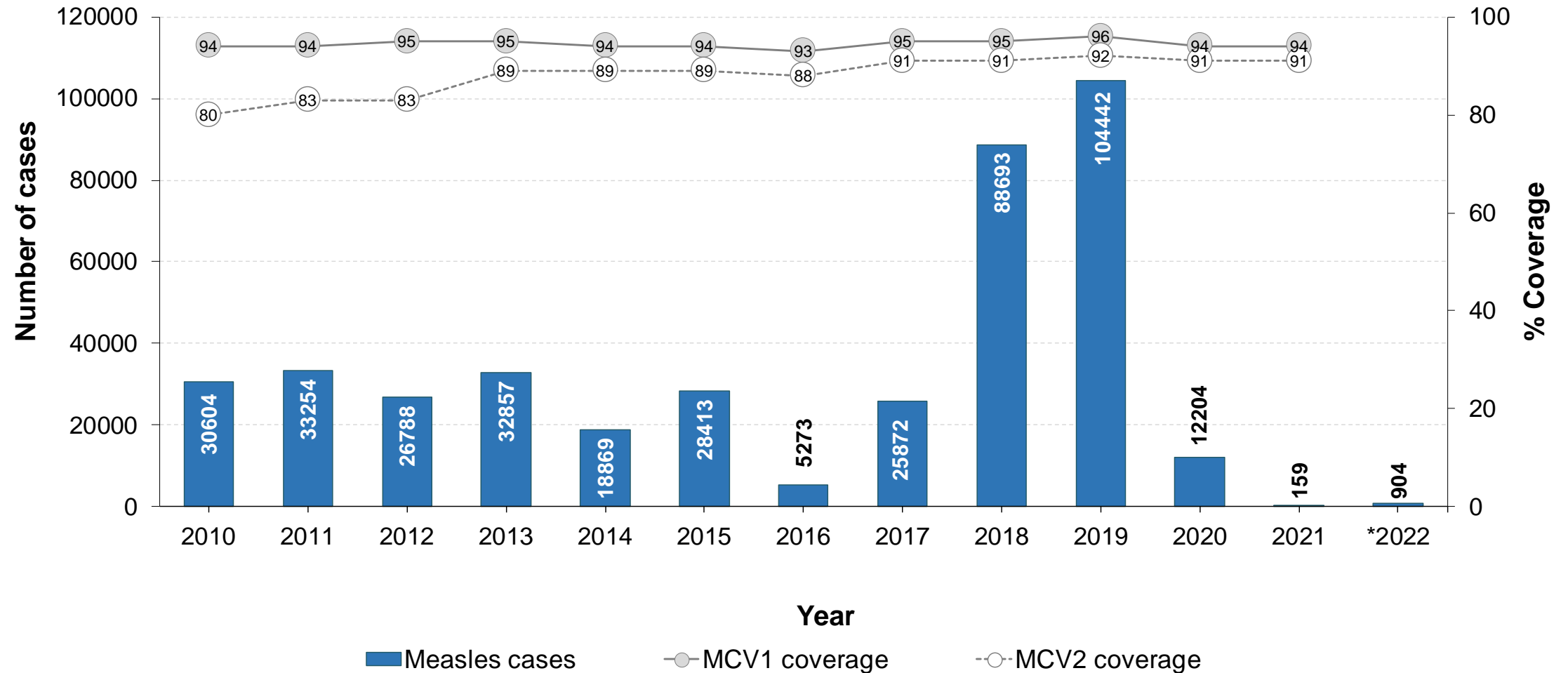


\*Age was unknown for 27 cases.

Population source: United Nations, Department of Economic and Social Affairs, Population Division. World Population Prospects: The 2022 revision.

Data source: Monthly aggregated and case-based data reported by Member States to WHO/Europe directly or via ECDC/TESSy data as of 31 January 2023

# Measles cases, MCV1 and MCV2 coverage by year— WHO European Region, 2010–December 2022



MCV1: first dose of measles-containing vaccine  
 MCV2: second dose of measles-containing vaccine

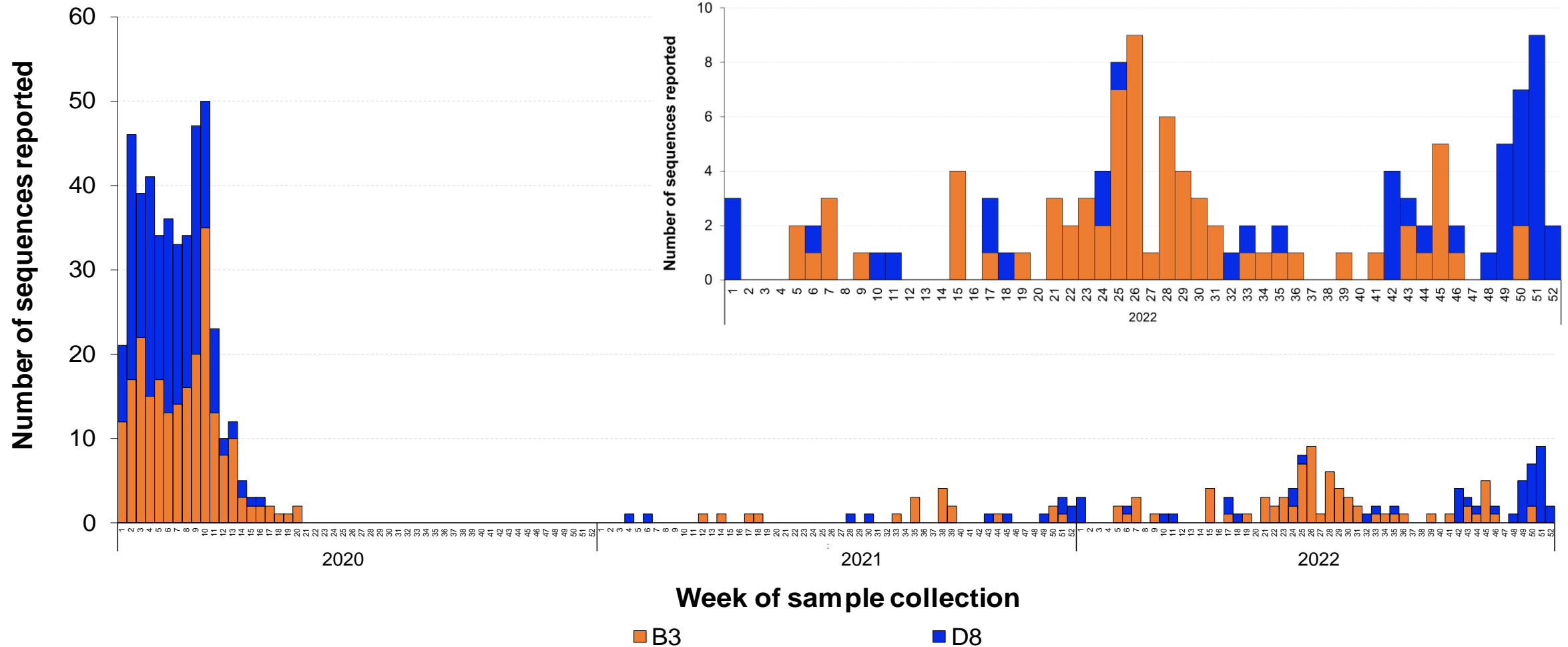
\*January –December 2022

Data source: 1) Measles cases – monthly aggregated and case-based data reported by Member States to WHO/Europe or via ECDC/TESSy as of 31 January 2023.

2) MCV1 and MCV2 coverage - WHO/UNICEF Estimates of National Immunization Coverage (WUENIC) as of 15 July 2022.



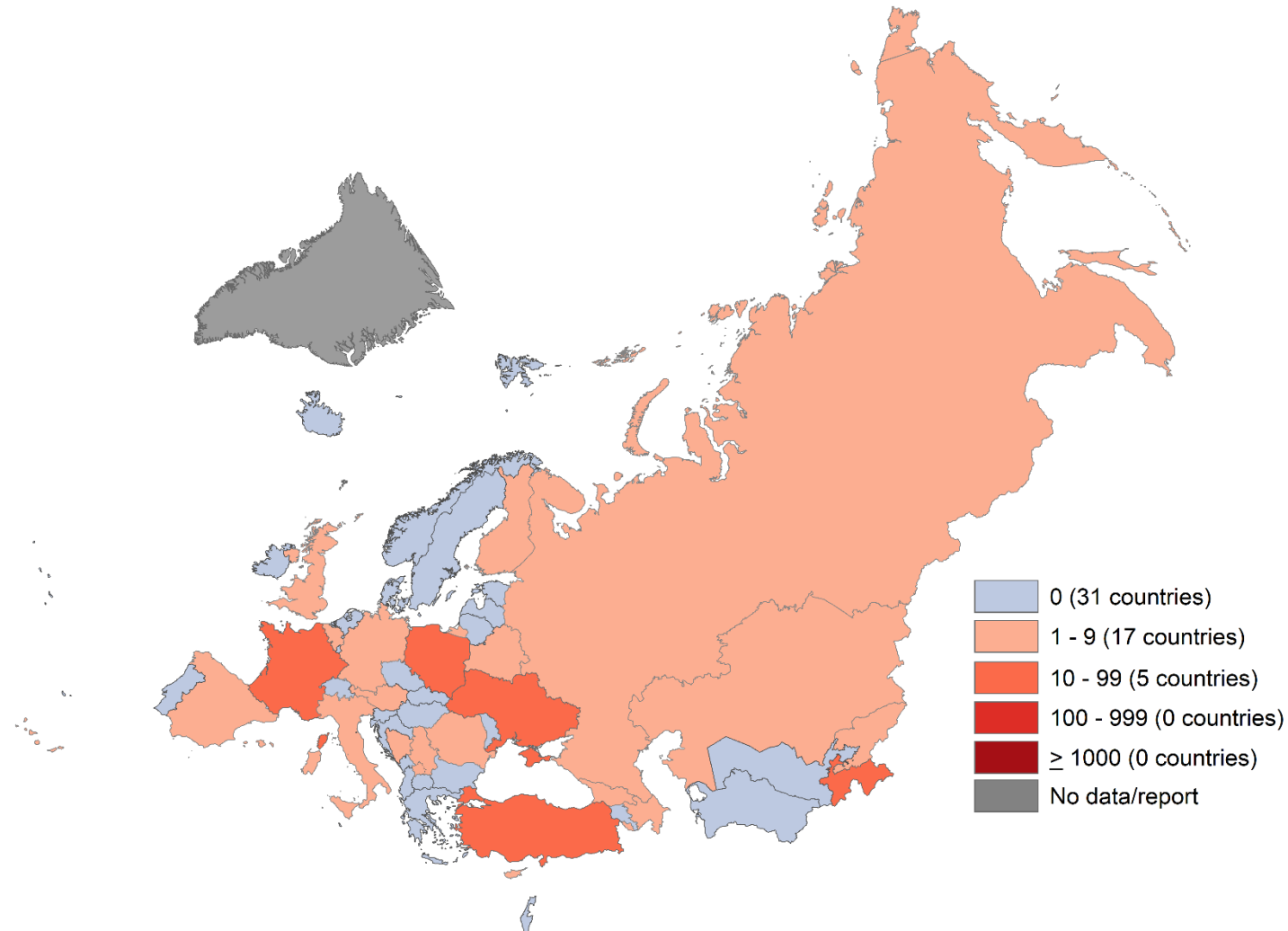
# Measles genotypes by week of sample collection— WHO European Region, week 1, 2020 to week 52, 2022



# Measles

## Latest update for 2021

# Measles cases—WHO European Region, 2021

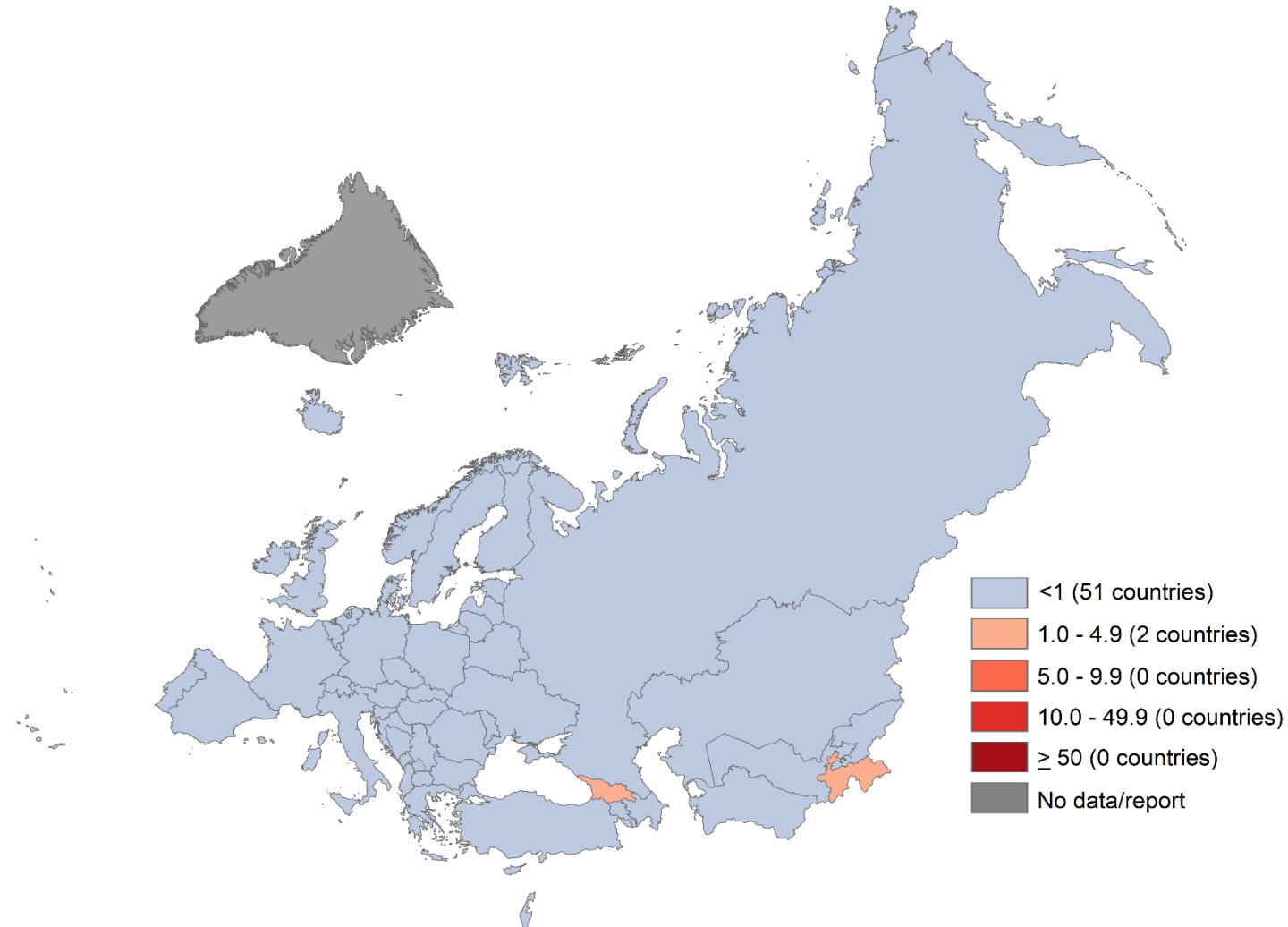


Top 10 countries	
Country	Cases
Türkiye	51
France	16
Ukraine	16
Poland	14
Tajikistan	10
Italy	8
Belgium	7
Germany	7
Georgia	5
Kyrgyzstan	4

22 (42%) countries reported measles cases for 2021.

Disclaimer: The boundaries and names shown and the designations used on this map do not imply the expression of any opinion whatsoever on the part of the World Health Organization concerning the legal status of any country, territory, city or area or of its authorities, or concerning the delimitation of its frontiers or boundaries. Dotted and dashed lines on maps represent approximate border lines for which there November not yet be full agreement. © WHO 2023. All rights reserved.

# Measles incidence per million population— WHO European Region, 2021



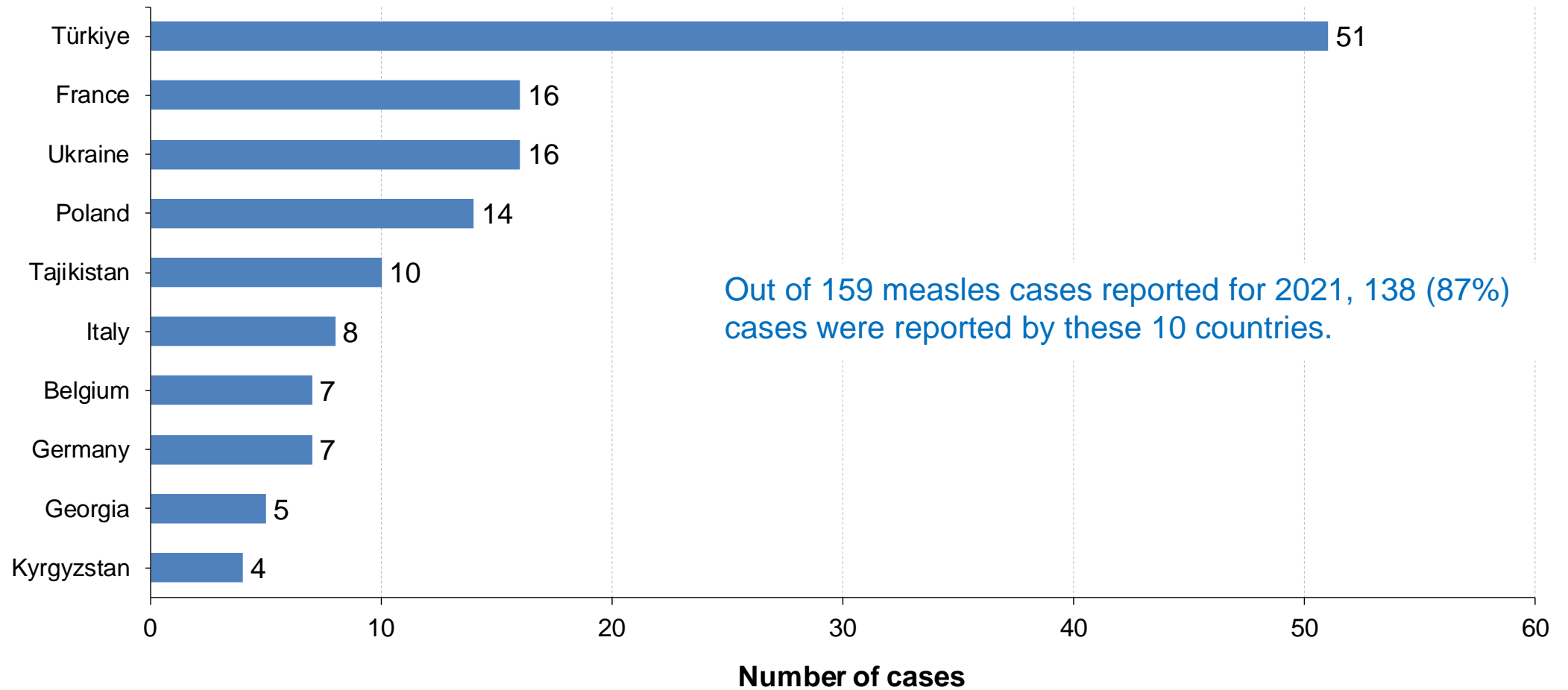
Top 10 countries		
Country	Cases	Incidence
Georgia	5	1.33
Tajikistan	10	1.03
Cyprus	1	0.80
Kyrgyzstan	4	0.61
Bosnia and Herzegovina	2	0.61
Belgium	7	0.60
Türkiye	51	0.60
Finland	3	0.54
Ukraine	16	0.37
Poland	14	0.37

Disclaimer: The boundaries and names shown and the designations used on this map do not imply the expression of any opinion whatsoever on the part of the World Health Organization concerning the legal status of any country, territory, city or area or of its authorities, or concerning the delimitation of its frontiers or boundaries. Dotted and dashed lines on maps represent approximate border lines for which there November not yet be full agreement. © WHO 2023. All rights reserved.

Population source: United Nations, Department of Economic and Social Affairs, Population Division. World Population Prospects: The 2022 revision.

Data source: Monthly aggregated and case-based data reported by Member States to WHO/Europe directly or via ECDC/TESSy data as of 31 January 2023

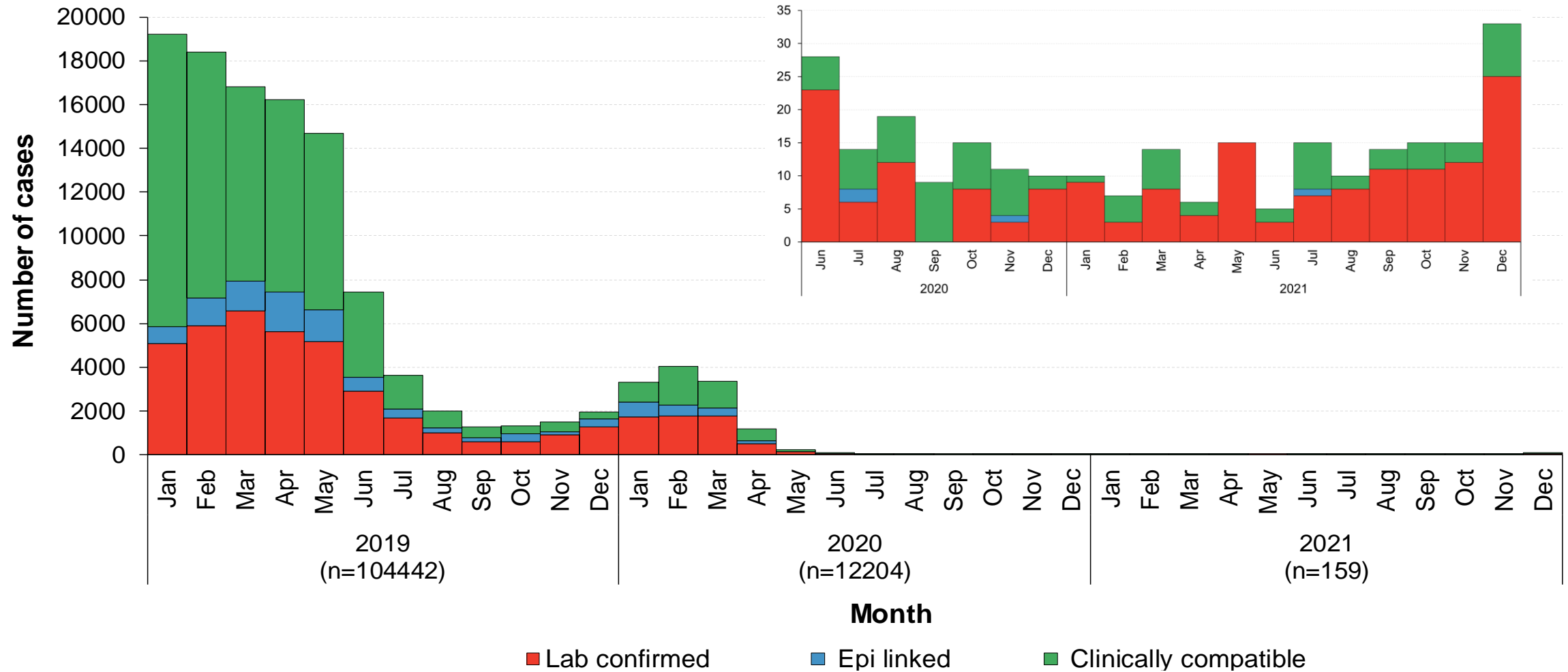
# Ten countries with the highest numbers of measles cases— WHO European Region, 2021



22 (42%) countries reported measles cases for 2021.

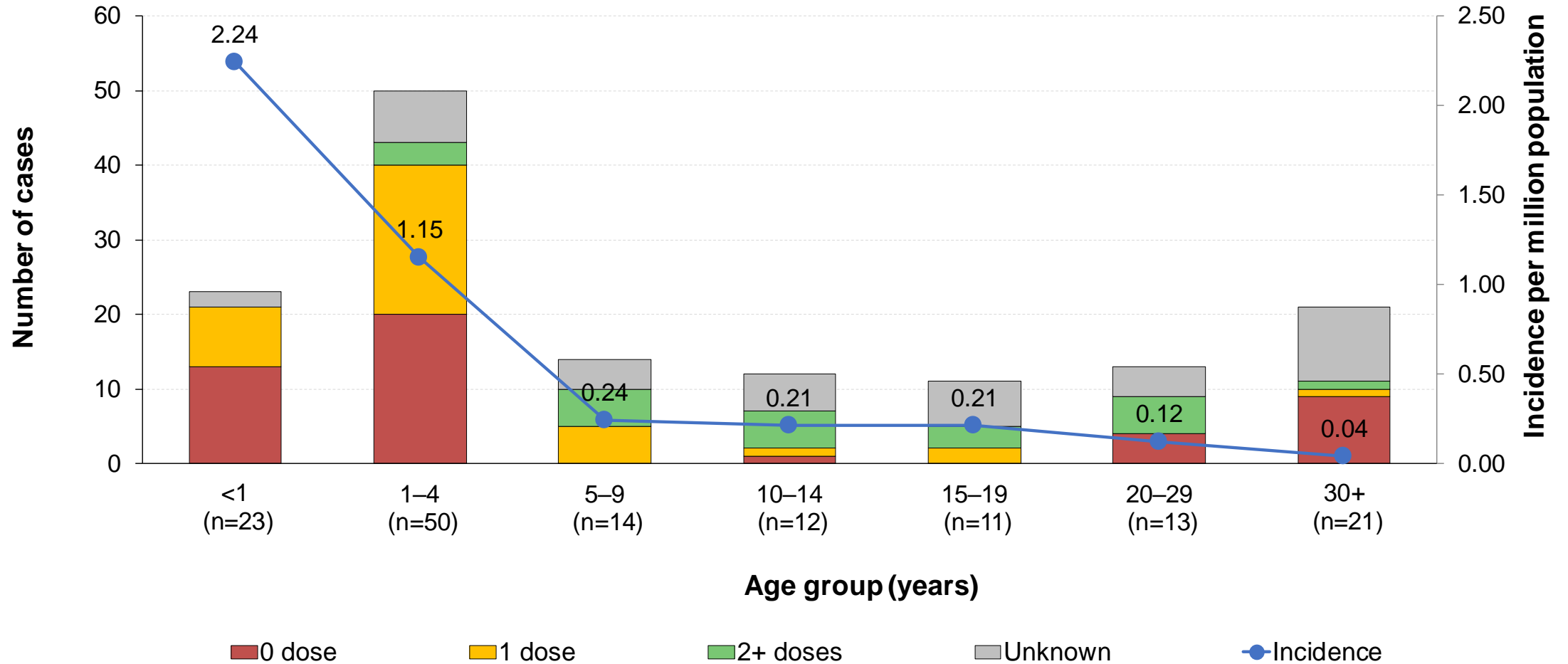
Data source: Monthly aggregated and case-based data reported by Member States to WHO/Europe directly or via ECDC/TESSy data as of 31 January 2023

# Measles cases by month—WHO European Region, 2019–2021



Criteria for date of case inclusion may differ in accordance with Member States' surveillance systems.

# Measles cases and incidence by age group\* and vaccination status—WHO European Region, 2021



\*Age was unknown for 15 cases.

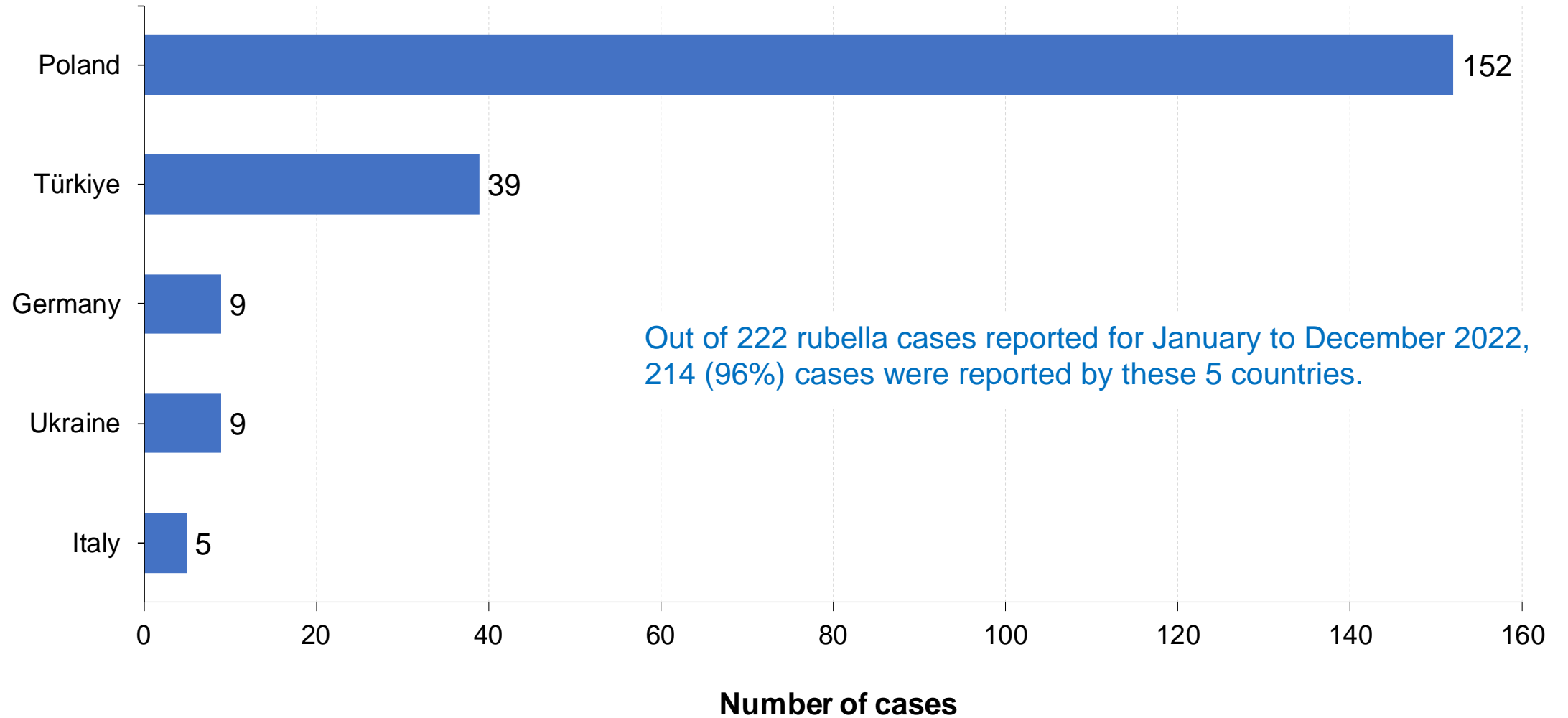
Population source: United Nations, Department of Economic and Social Affairs, Population Division. World Population Prospects: The 2022 revision.

Data source: Monthly aggregated and case-based data reported by Member States to WHO/Europe directly or via ECDC/TESSy data as of 31 January 2023

# Rubella Updates including 2022



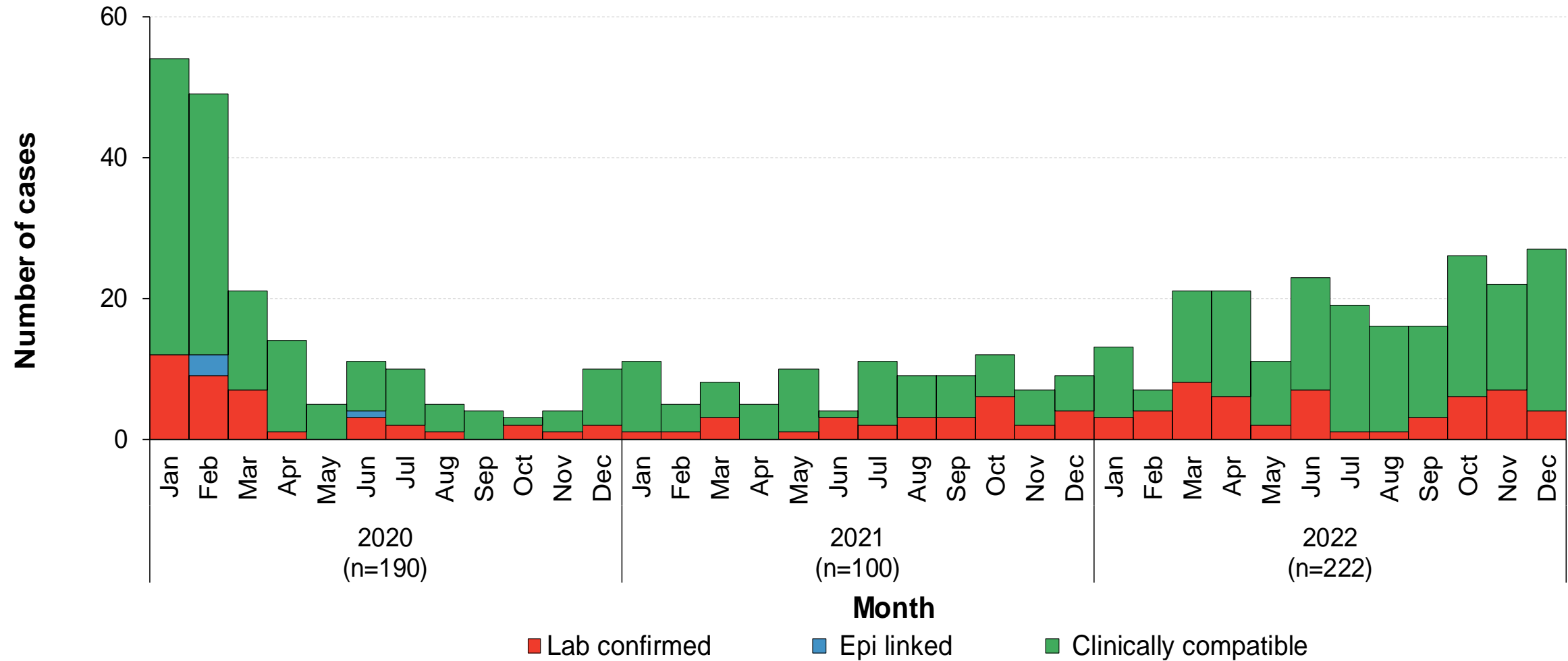
# Five countries with the highest numbers of rubella cases— WHO European Region, January–December 2022



10 (20%) countries reported rubella cases in the rolling 12-months.

Data source: Monthly aggregated and case-based data reported by Member States to WHO/Europe directly or via ECDC/TESSy data as of 31 January 2023

# Rubella cases by month—WHO European Region, 2020–December 2022

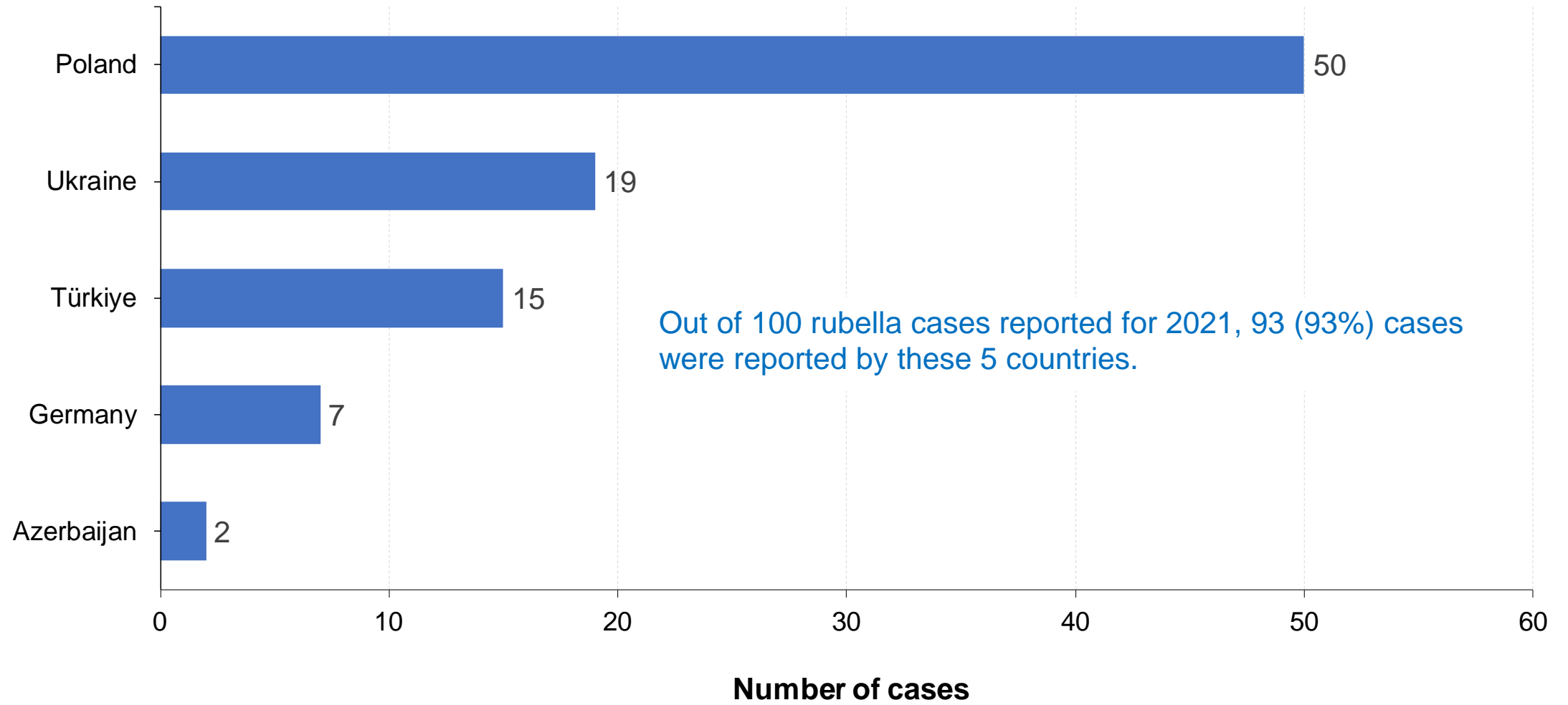


Criteria for date of case inclusion may differ in accordance with Member States' surveillance systems.

# Rubella

## Latest update for 2021

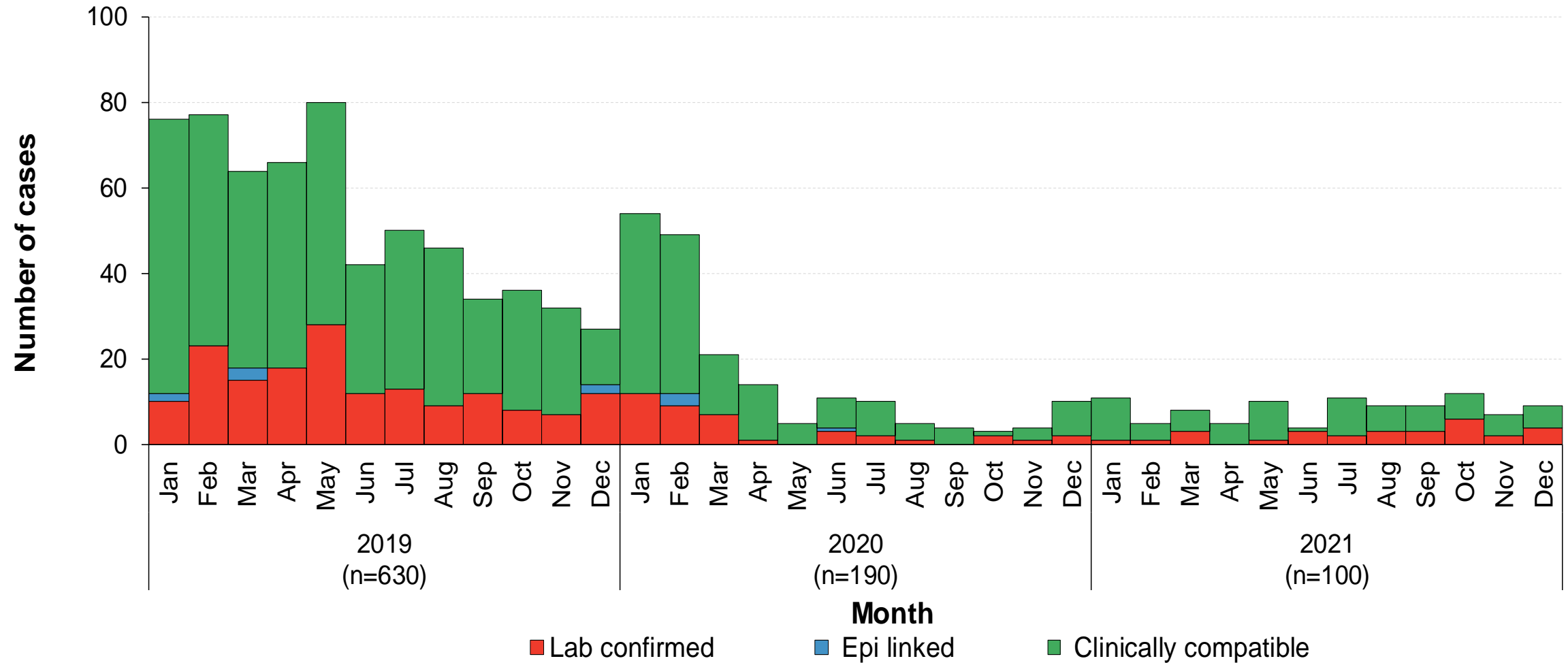
# Five countries with the highest numbers of rubella cases— WHO European Region, 2021



12 (24%) countries reported rubella cases for 2021.

Data source: Monthly aggregated and case-based data reported by Member States to WHO/Europe directly or via ECDC/TESSy data as of 31 January 2023

# Rubella cases by month—WHO European Region, 2019–2021



Criteria for date of case inclusion may differ in accordance with Member States' surveillance systems.

# Links to measles and rubella information

- WHO EpiData  
<https://www.who.int/europe/teams/vaccine-preventable-diseases-immunization/who-epidata>
- Country slides for measles and rubella  
<https://www.who.int/teams/immunization-vaccines-and-biologicals/immunization-analysis-and-insights/surveillance/monitoring/provisional-monthly-measles-and-rubella-data>
- WHO EpiBrief  
<https://www.who.int/europe/teams/vaccine-preventable-diseases-immunization/who-epibrief>